

# **Rank up to Executive**

[Watch video HERE](#)

YOUNG LIVING

# Terminology Changes

OLD	NEW
Member	Customer
Business builder	Brand partner
Premium Starter Kit (PSK)	Starter bundle
Member Services	Customer Service
Upline	Support team
Downline	Team
Crossline	Cross team
One-time order	Shop
Monthly autoship program	Subscribe to Save
Orders on autoship program	Subscription
Essential Rewards	Loyalty Rewards program
Essential Rewards points	Reward points
Customer PV	Customer personal volume
Business builder PV	Brand partner personal volume

\*These changes will go into effect when the new website is launched.

# Income Potential

according to the 2018 Income Disclosure Statement...

YOUNG LIVING MEMBER RANK	ANNUAL AVERAGE INCOME
Royal Crown Diamond	\$1,538,528
Crown Diamond	\$591,506
Diamond	\$313,866
Platinum	\$117,949
Gold	\$47,253
Silver	\$15,861
Executive	\$3,835
Senior Star	\$1,551
Star	\$261
Distributor	\$4

What annual income would change the way you live your life?

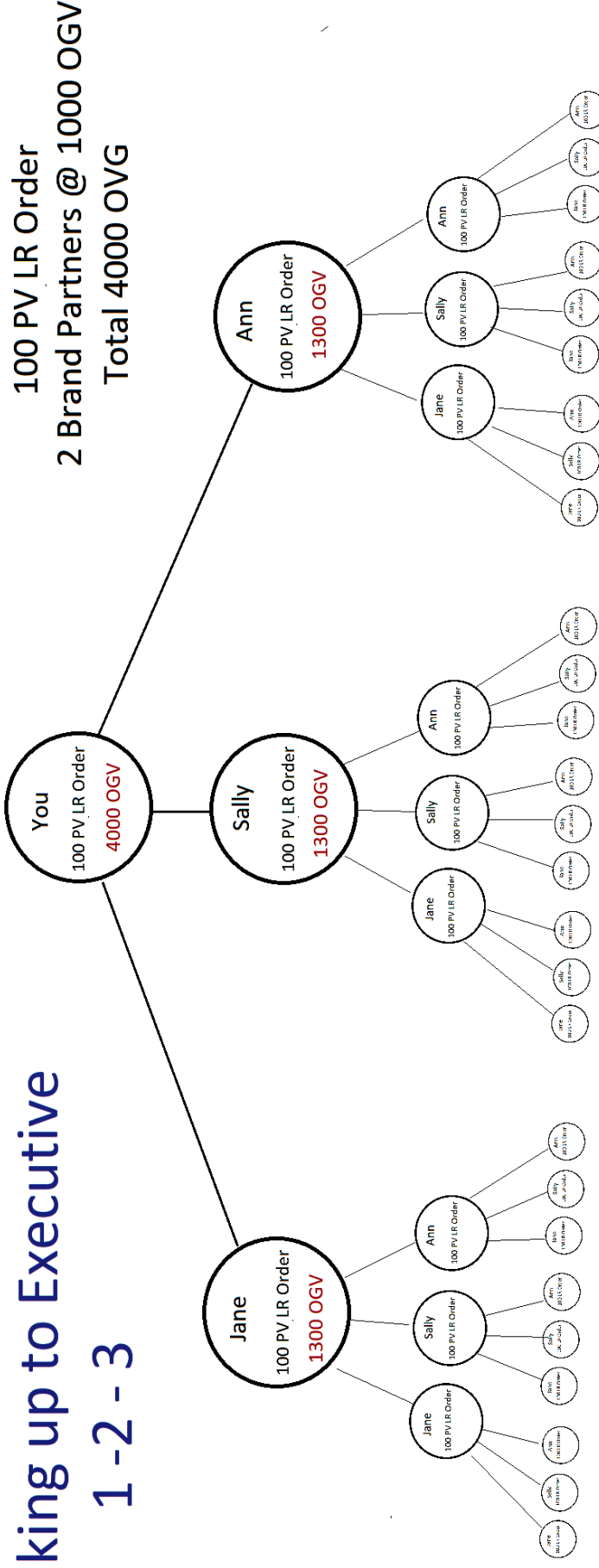
Numbers are an average of 2018 statistics. You can find full stats here: [https://www.youngliving.com/en\\_US/opportunity/income-disclosure](https://www.youngliving.com/en_US/opportunity/income-disclosure)

Distributor	Star	Senior Star	Executive	Silver	Gold	Platinum	Diamond	Crown Diamond	Royal Crown Diamond
100 PV*	100 PV	100 PV	100 PV	100 PV	100 PV	100 PV	100 PV	100 PV	100 PV
	500 OGV	2K OGV	4K OGV	10K OGV	35K OGV	100K OGV	250K OGV	750K OGV	1.5M OGV
			2 x 1K OGV Legs	2 x 4K OGV Legs	3 x 6K OGV Legs	4 x 8K OGV Legs	5 x 15K OGV Legs	6 x 20K OGV Legs	6 x 35K OGV Legs
				1,000 PGV 232.75	1,000 PGV 90.5	1,000 PGV 0	1,000 PGV 0	1,000 PGV 0	1,000 PGV 0

## Rank Qualifications

# Ranking up to Executive

1-2-3



The key is Duplication (this is a plan that can easily be duplicated)

You are also building a solid foundation to rank up to Silver & Gold!

1. You enroll 3 Brand Partners (your level 1) with a Starter Bundle (100 PV) and Loyalty Rewards (they are committed to their 100 PV LR monthly order - because they want to get their full commissions).

2. You train your 3 Brand Partners (your level 1) to enroll 3 Brand Partners (their level 1, your level 2) with a Starter Bundle (100 PV) on Loyalty Rewards (who are also committed to their 100 PV LR monthly order - because they want to get their full commissions).

3. Your 3 Brand Partners train their 3 Brand Partners to enroll 3 Brand Partners with a Starter Bundle (100 PV) on Loyalty Rewards (who are also committed to their 100 PV monthly order - because they want to get their full commissions).